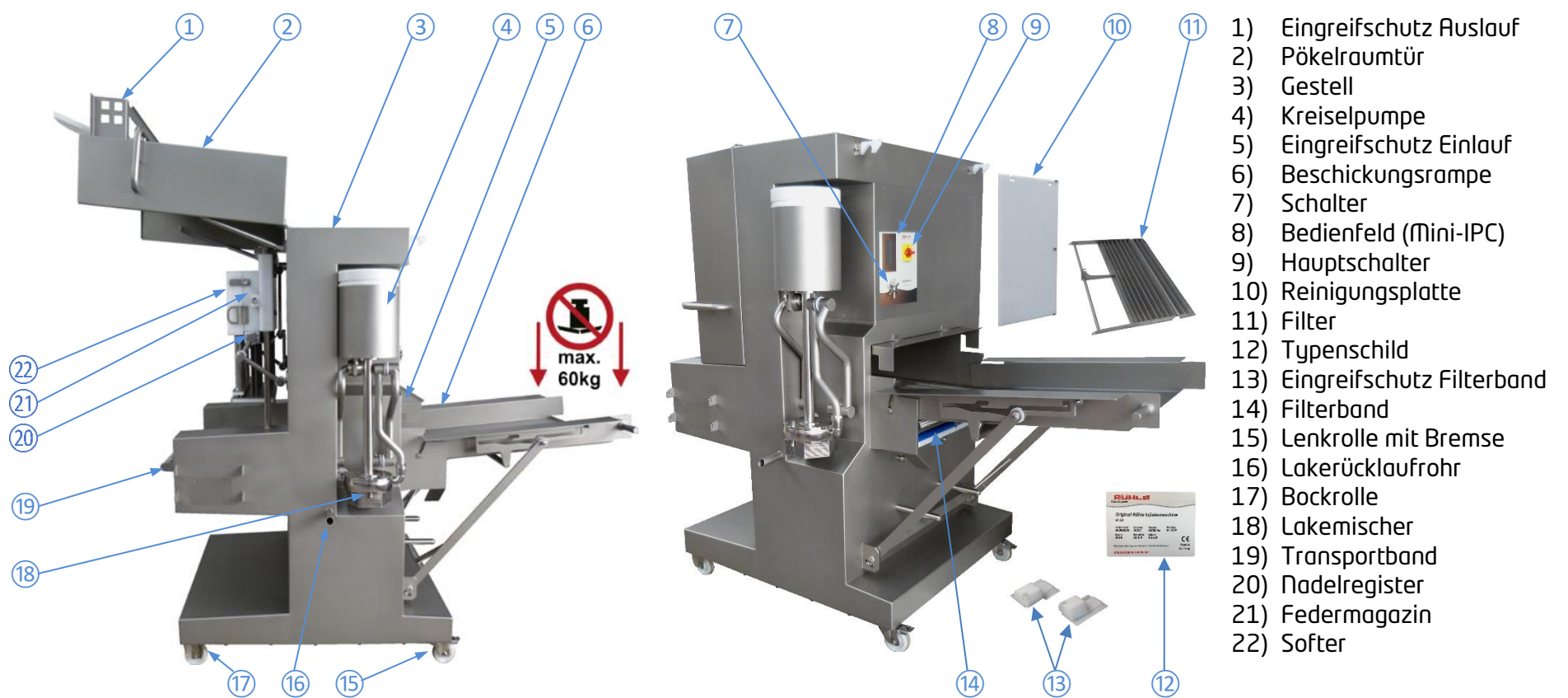




I • Maschine aufstellen



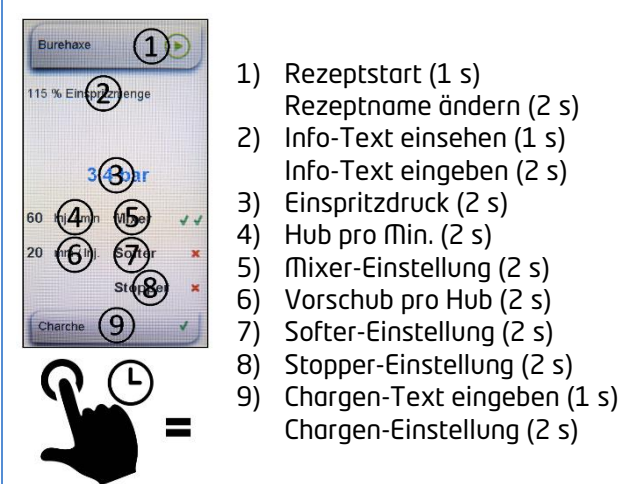
II • Bedienung



III • Rezeptstart / Rezeptauswahl



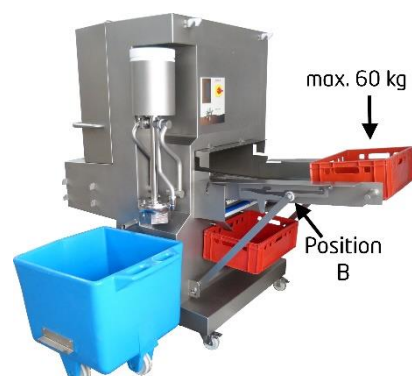
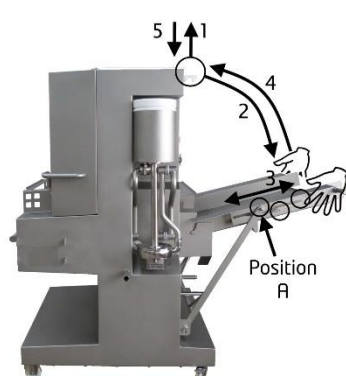
IV • Programmierung Rezept



V • Neuanlage Rezept



6 • Beschickungsrampe



4 • Kreispumpe



18 • Lakemischer

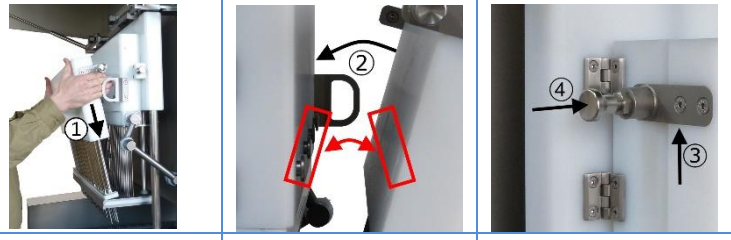


	Stop
	Soft Mix
	Hard Mix

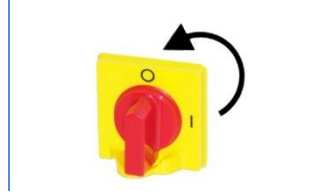
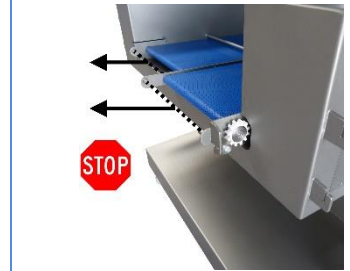
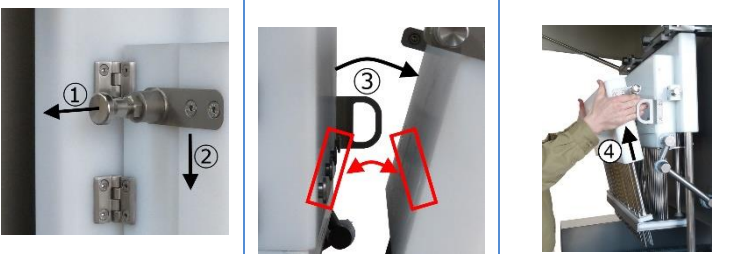
22 • Softer Ein- u. Ausbau

VI • Sicherheitsfunktionen

Einbau:

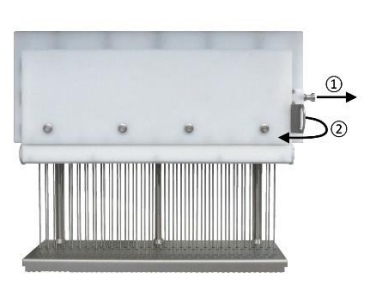


Ausbau:



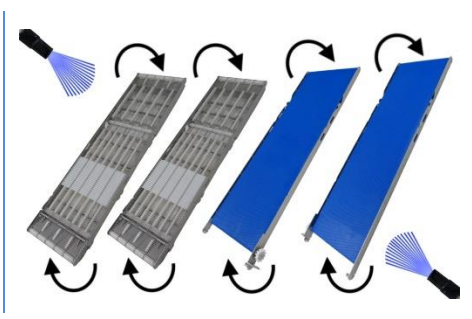
21 • Nadelwechsel

VII • Nadelbalken



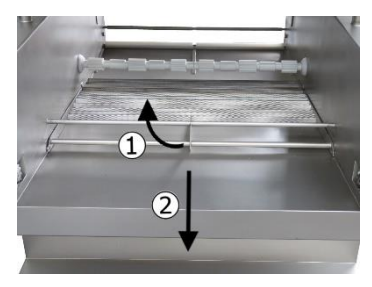
19 / 14 • Transportband / Filterband

VIII • Bandentnahme



11 • Filter

IX • Werkzeugmagazin



X • Reinigung

