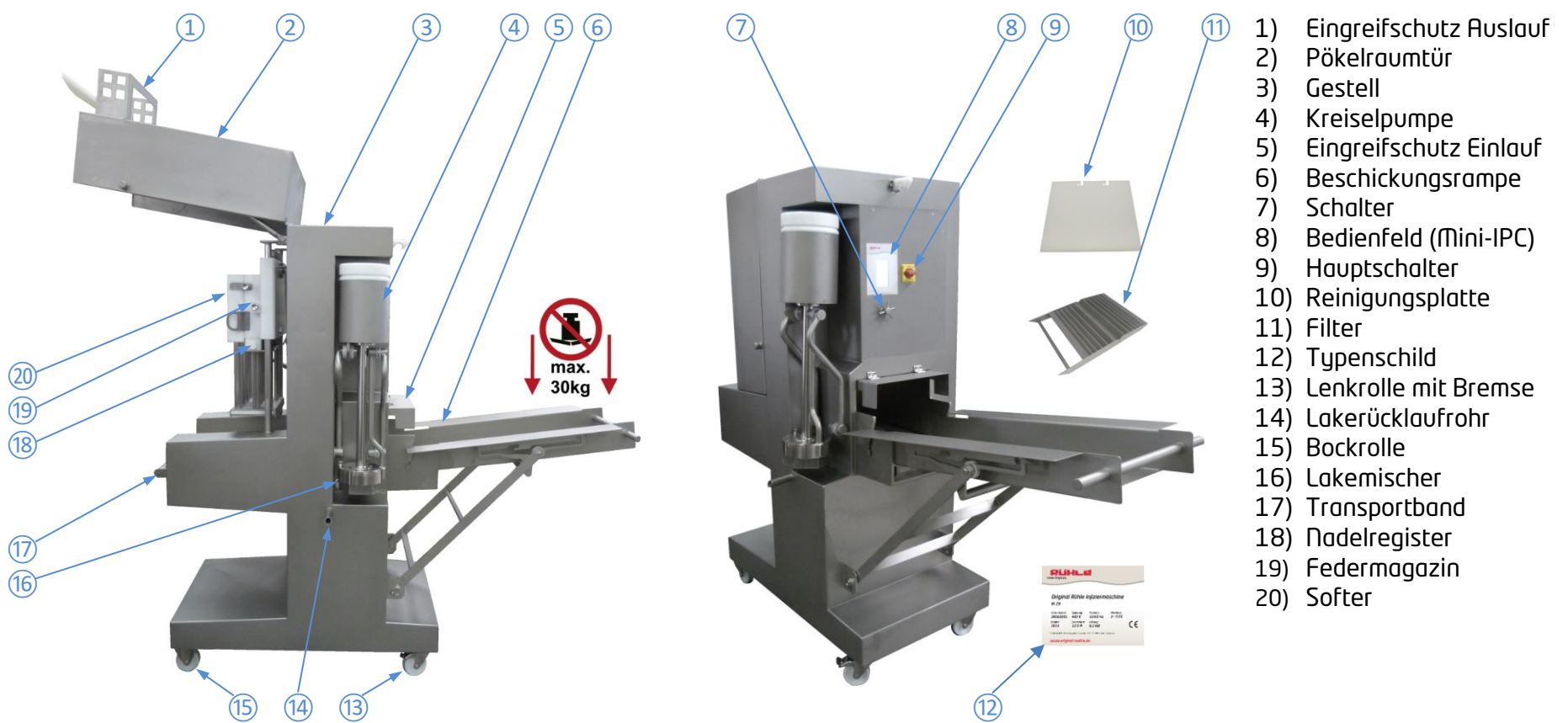




I • Maschine aufstellen



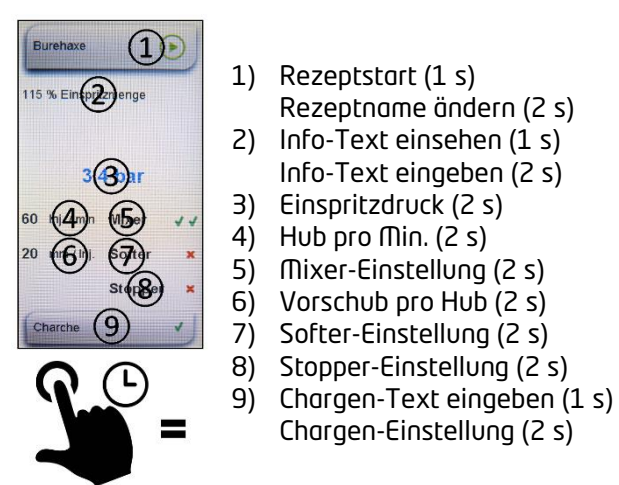
II • Bedienung



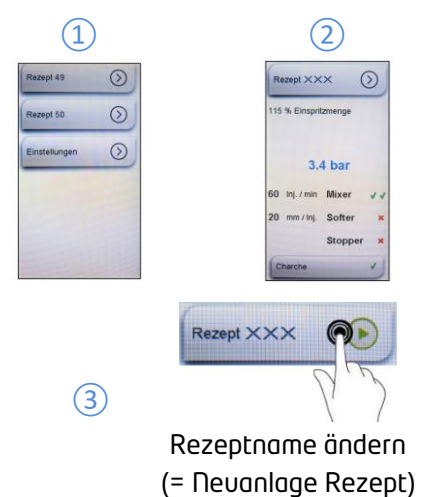
III • Rezeptstart / Rezeptauswahl



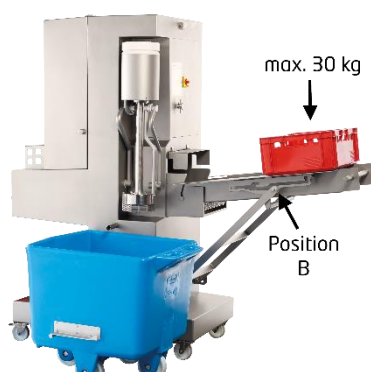
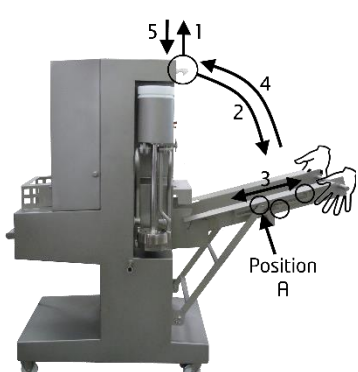
IV • Programmierung Rezept



V • Neuanlage Rezept



6 • Beschickungsrampe



4 • Kreispumpe



16 • Lakemischer



	Stop
	Soft Mix
	Hard Mix

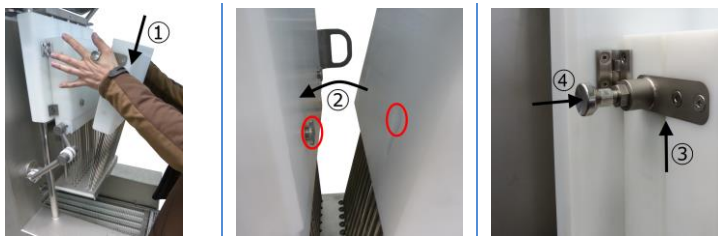
20 • Softer Ein- u. Ausbau

1 • Eingreifschutz

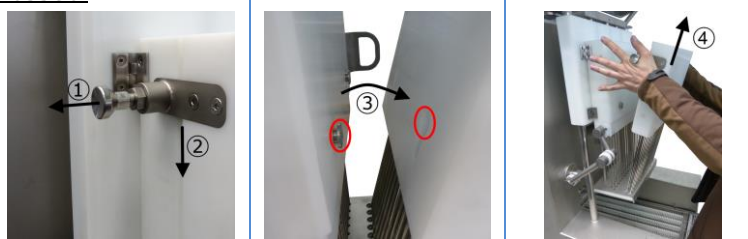
5 • Eingreifschutz

2 • Pökelraumtür

Einbau:

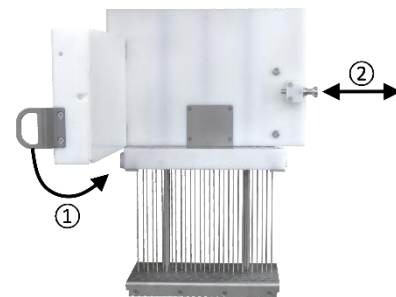
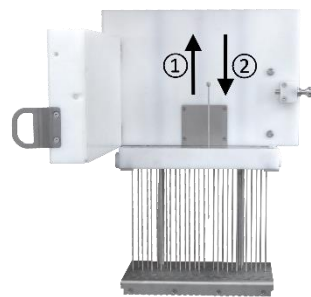
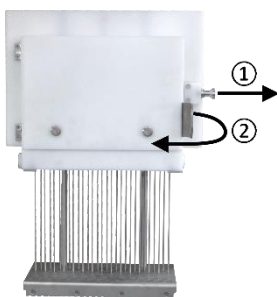


Ausbau:



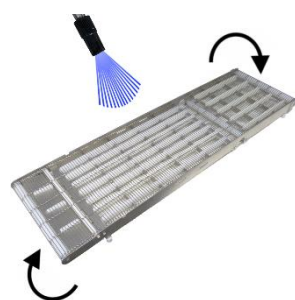
18 • Nadelwechsel

VI • Nadelbalken



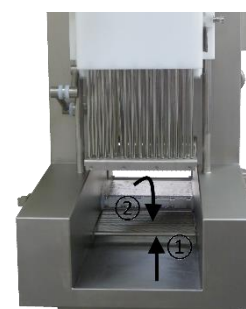
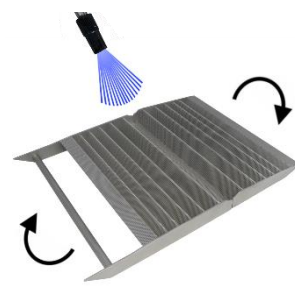
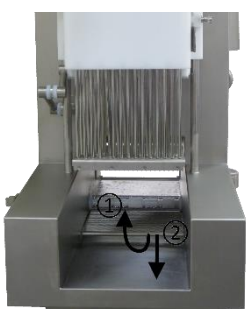
17 • Transportband

VII • Bandentnahme

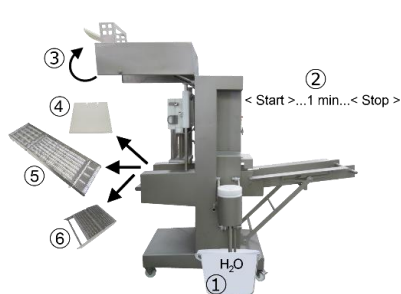
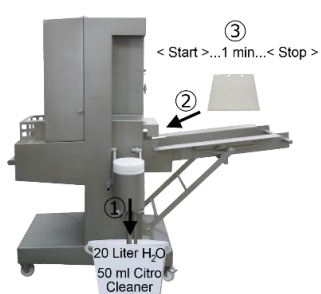


11 • Filter

VIII • Werkzeugmagazin



IX • Reinigung



Kreiselpumpe

