



I • Maschine aufstellen



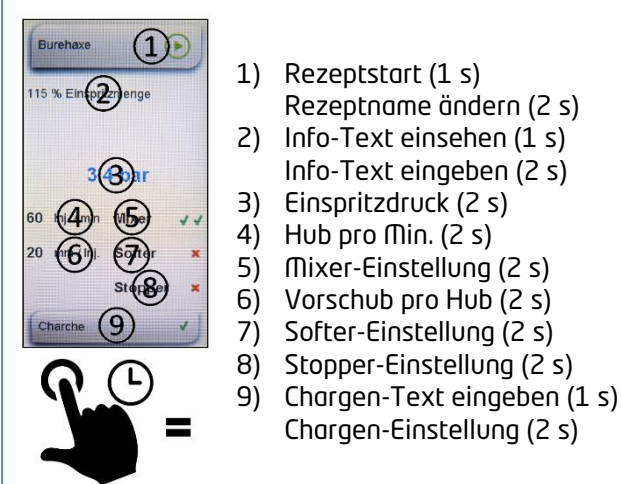
II • Bedienung



III • Rezeptstart / Rezeptauswahl



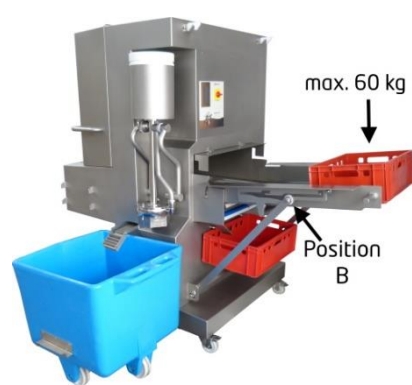
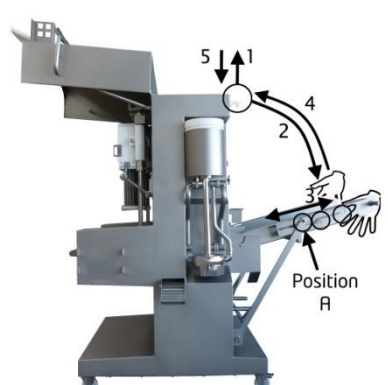
IV • Programmierung Rezept



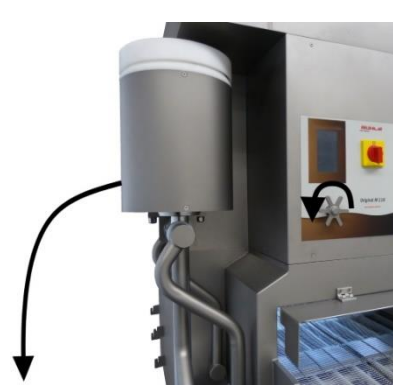
V • Neuanlage Rezept



6 • Beschickungsrampe



4 • Kreispumpe

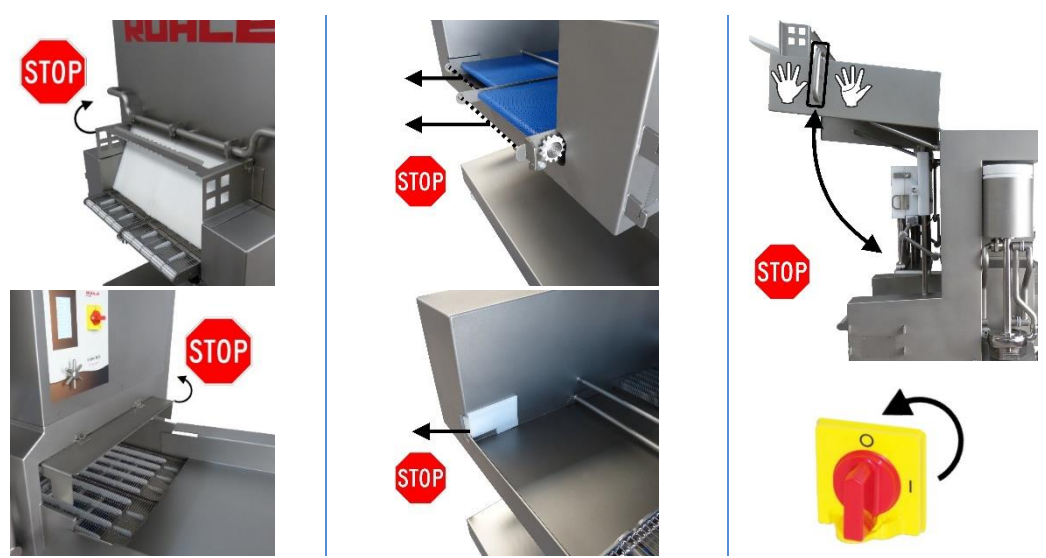


18 • Lakemischer



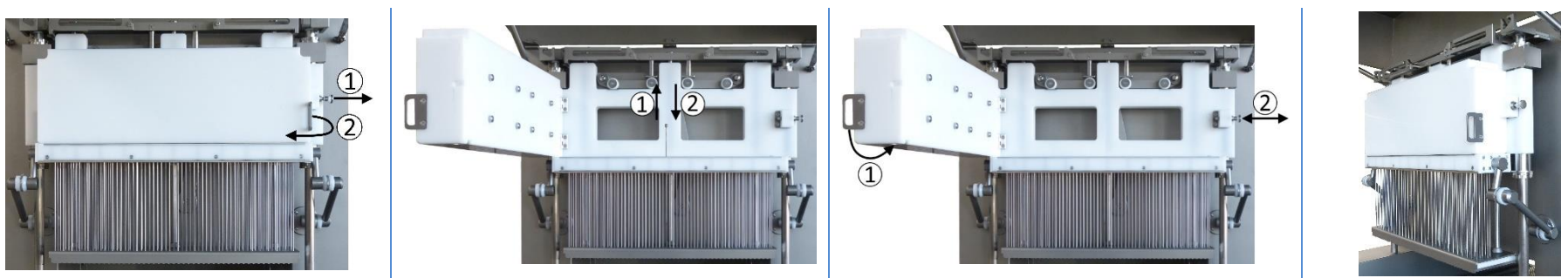
| | |
|--|----------|
| | Stop |
| | Soft Mix |
| | Hard Mix |

VI • Sicherheitsfunktionen



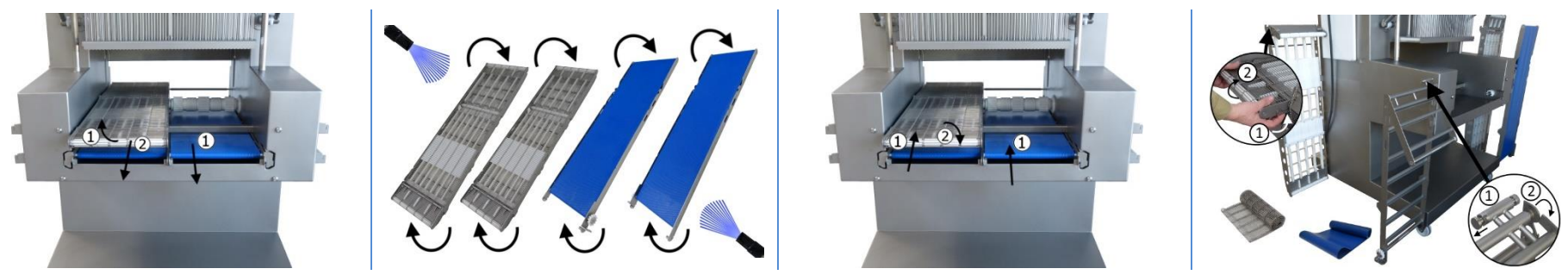
21 • Nadelwechsel

VII • Nadelbalken



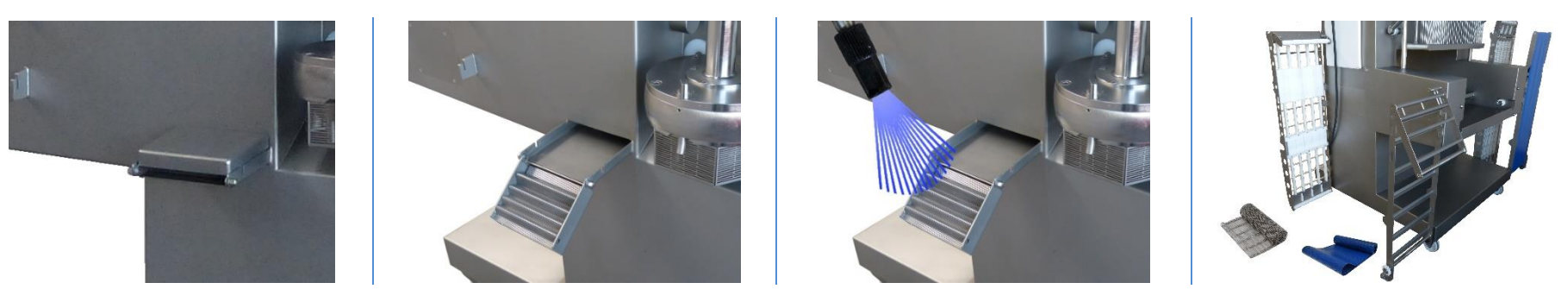
19 / 14 • Transportband / Filterband

VIII • Bandentnahme



11 • Filter

IX • Werkzeugmagazin



X • Reinigung

