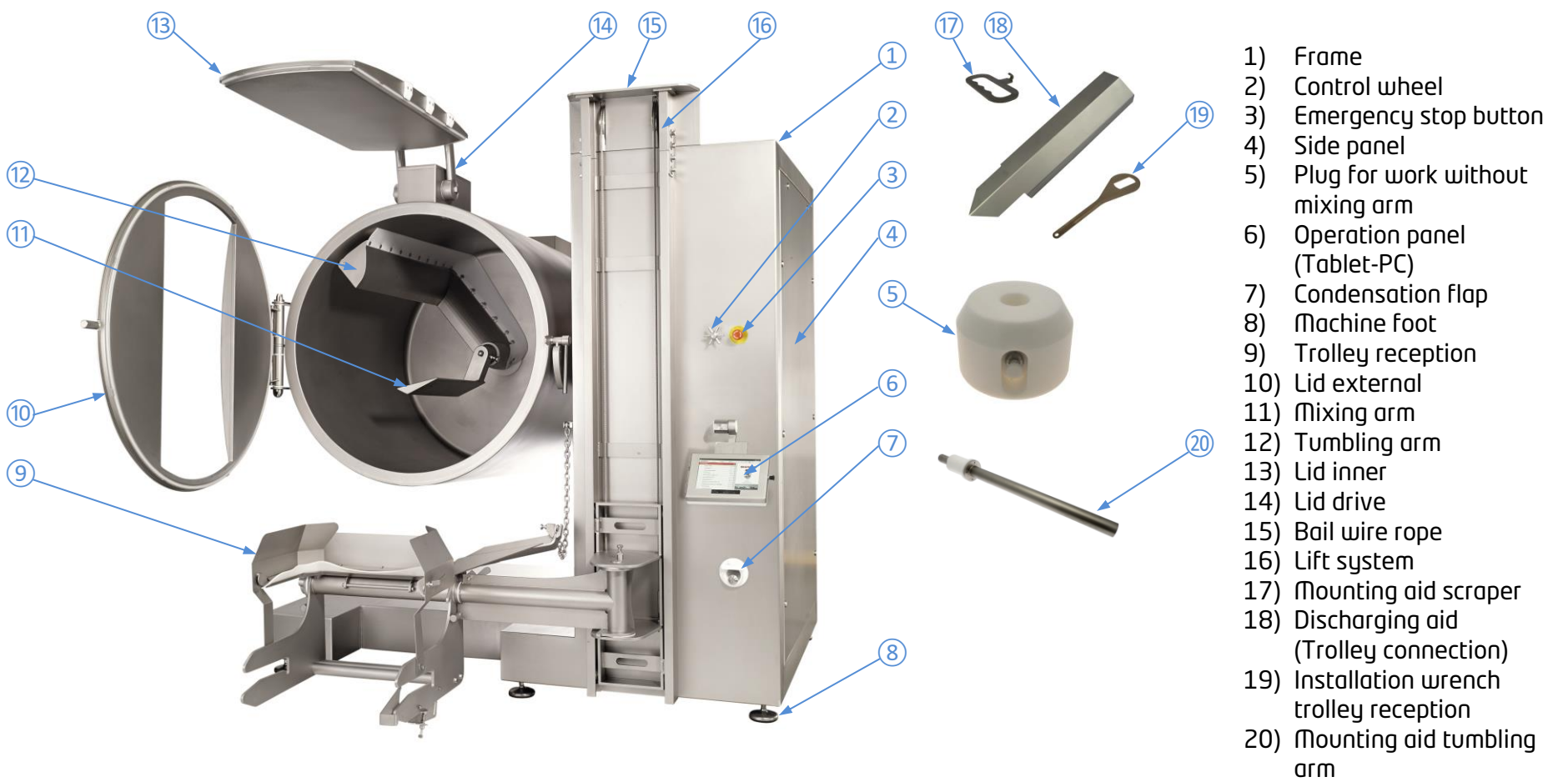




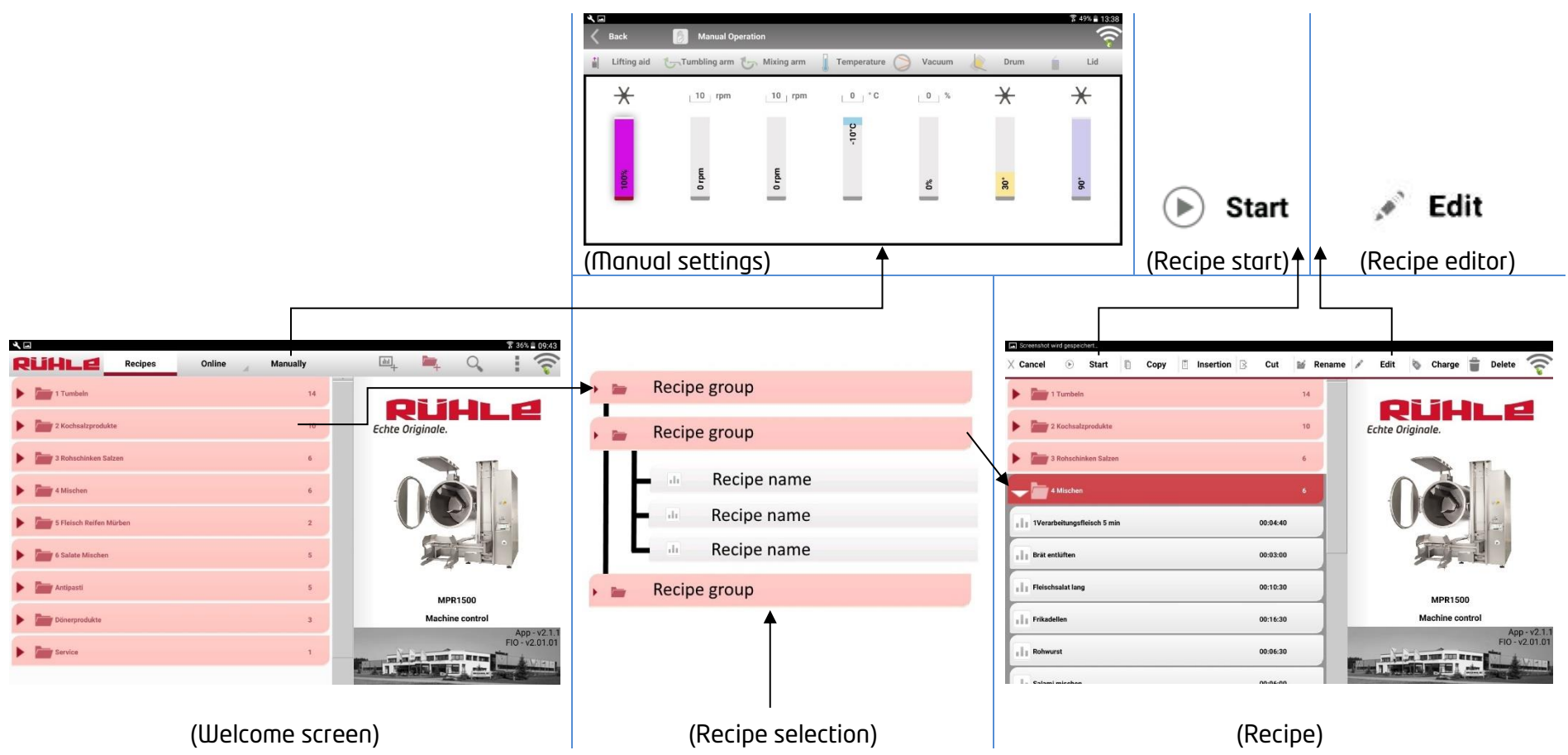
I • Installing the machine



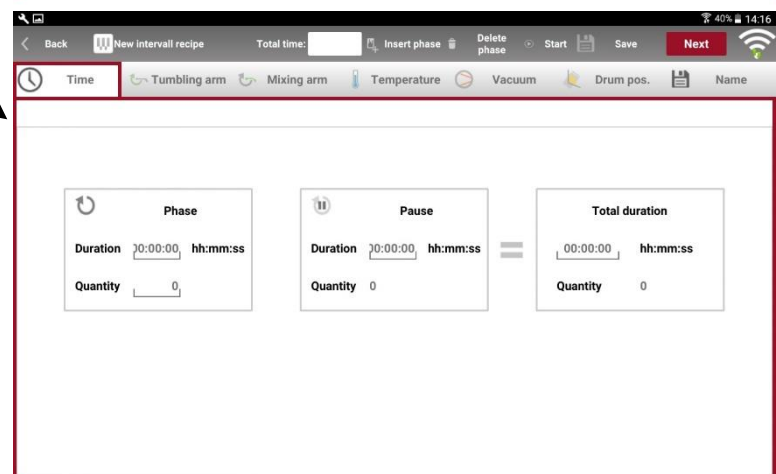
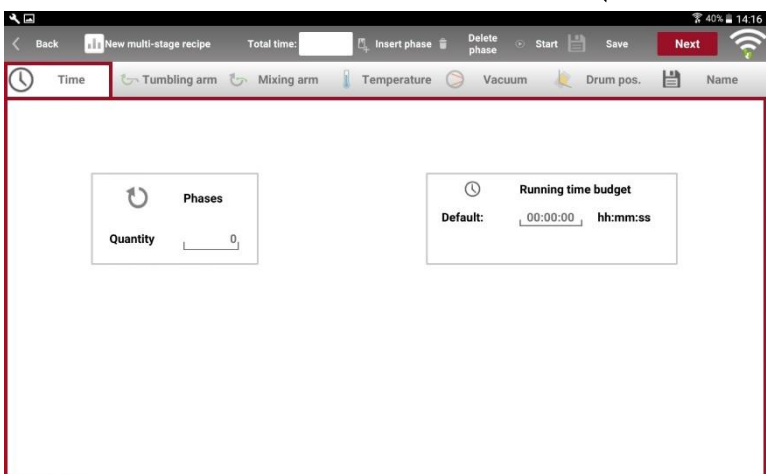
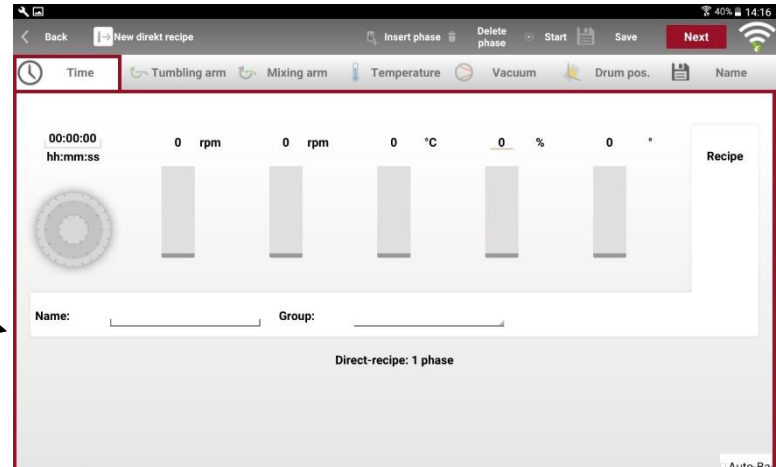
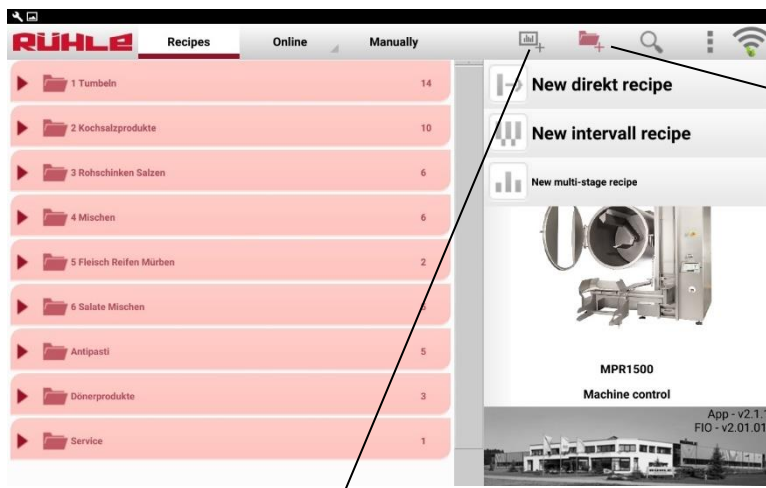
II • Operation



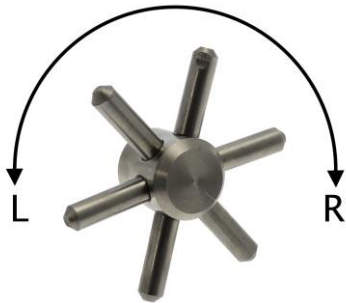
▶ • Recipe selection / Recipe start



• Programming / Programming recipes

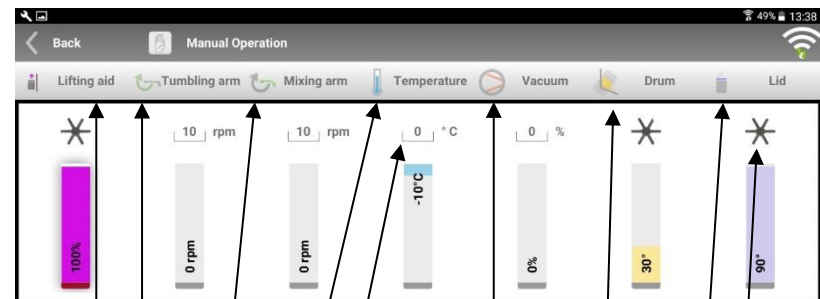


* Control wheel - Manual operation



Limit stop left	Limit stop right
Lid close	Lid open
Swing drum down	Swing drum up
Lifting aid downwards	Lifting aid upwards
Tumbling system counterclockwise	Tumbling system clockwise
Simultaneous movement of drum and arm (discharging)	Simultaneous movement of drum and arm (discharging)

III • Manual settings



- Lifting aid
- Tumbling arm (0 rpm to 16 rpm)
- Mixing arm (0 rpm to 16 rpm)
- Temperature (-25°C to +30°C)
- Input boxes
- Vacuum (0% to 90%)
- Drum (30° to 95°)
- Lid (0° to 90°)
- Icon for manual control

IV • Cleaning

