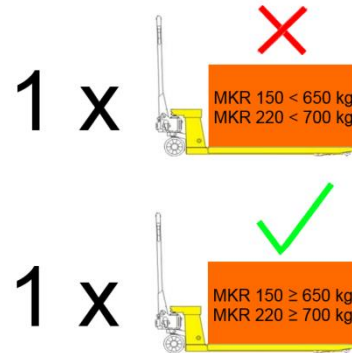
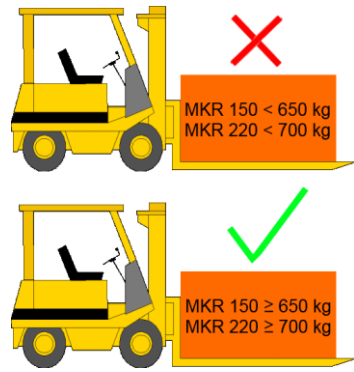
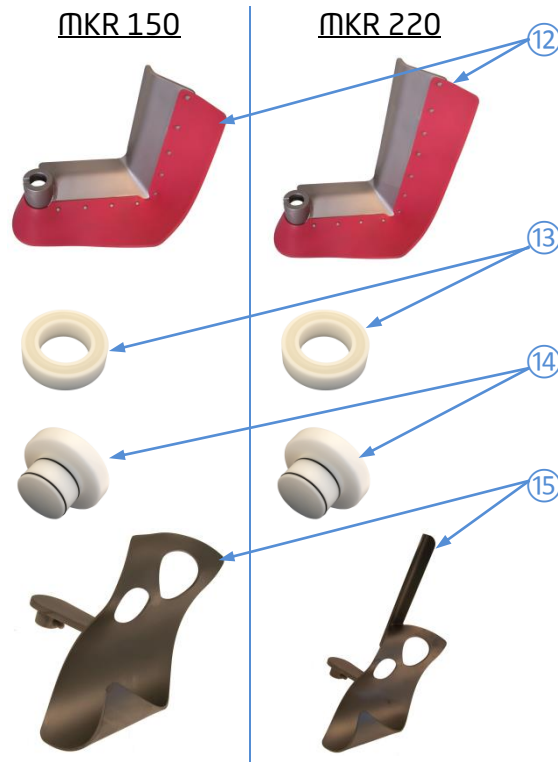




## I • Installing the machine

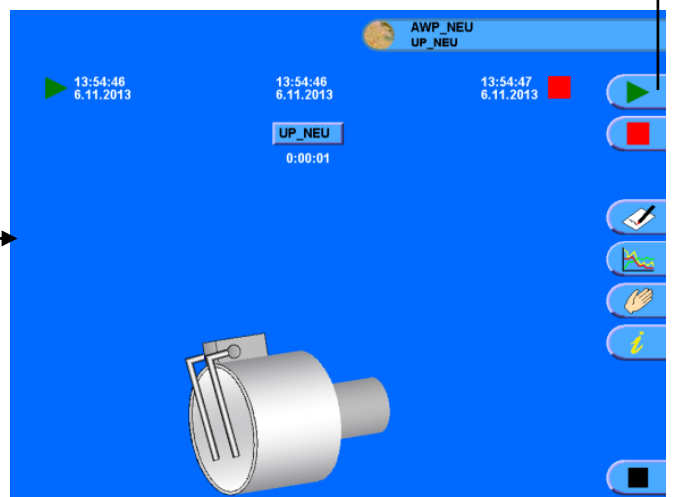
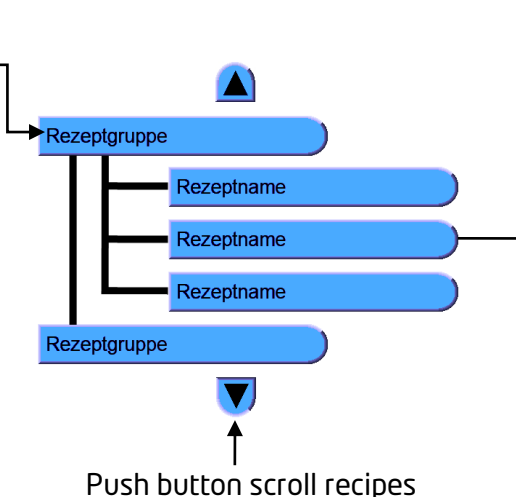
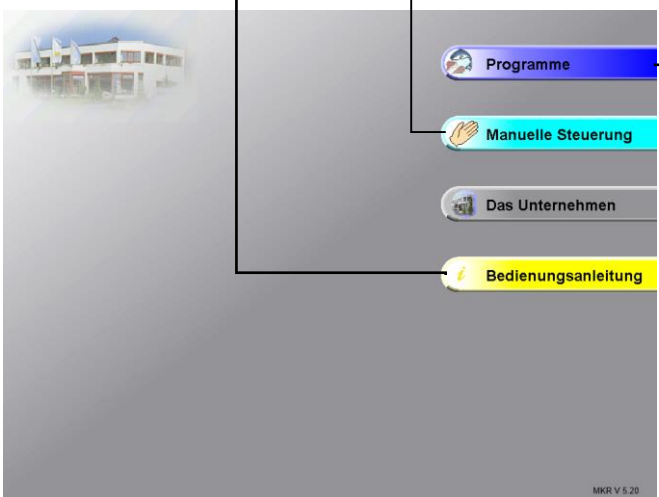
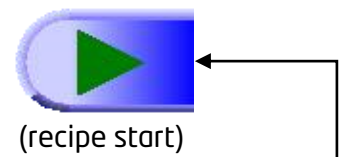
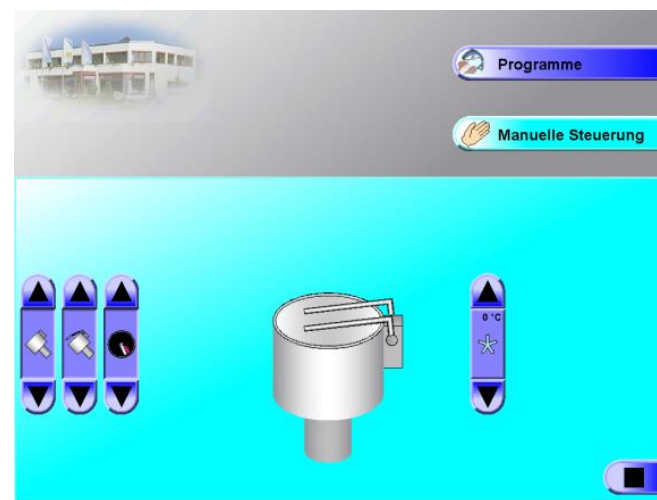


## II • Operation



- 1) Operation panel
- 2) Hood
- 3) Hood
- 4) Type plate
- 5) wheel
- 6) Guide roll with brake
- 7) Frame
- 8) Drum
- 9) Tumbling system
- 10) Lid
- 11) Emergency stop button
- 12) Tumbling arm
- 13) Ring
- 14) Blank plug
- 15) Mixing arm

## ▶ Recipe selection / recipe start



(Welcome screen)

(Recipe selection)

(Recipe)

▶ • Recipe selection / recipe start

AWP\_NEU  
UP\_NEU

13:54:46  
6.11.2013

13:54:46  
6.11.2013

13:54:47  
6.11.2013

UP\_NEU  
0:00:01

▶ Start / Pause

■ Stop

Phases

Recipe editor

Statistic

Manual control

Information on/off

Back

(Programming recipes)

Editor		
Passwort 0		
1	2	3
4	5	6
7	8	9
0	X	✓

Factory setting password "0"

📝 • Programming recipes

AWP\_NEU  
Tumbler

Phases overview

Inserting existing phases

Back

Inserting new phase

Copying active phase

Deleting active phase

Phase header

Time

Temperature

Revolutions tumbling arm

Vacuum

Degermination

Drum position

Lid position

1  
UP\_NEU  
1 mal  
1 Phase  
00:00:01  
00:00:01

1  
00:00:01  
0 °C  
0 1/min  
0 %  
0 %  
0 ° zu

1) Name "new recipe"  
2) Press copy

Programming recipes:

Originales AWP  
AWP\_NEU

Neues AWP  
AWP\_NEU

Kopieren Umbenennen

Neu Löschen

👉 • Manual settings

Programme

Manuelle Steuerung

Button tumbling arm  
Clockwise/Counterclockwise

Button lid position

Button drum position

Recipe selection

Start button refrigeration

Back

III • Cleaning

