



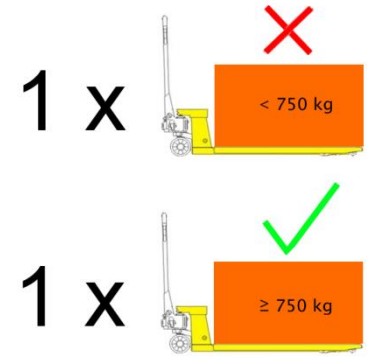
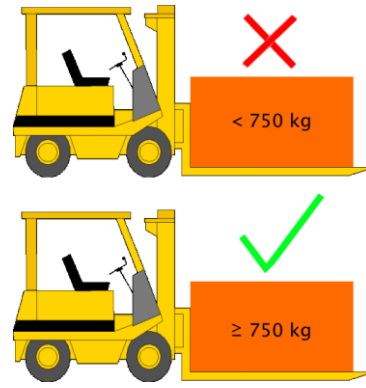
I • Installing the machine



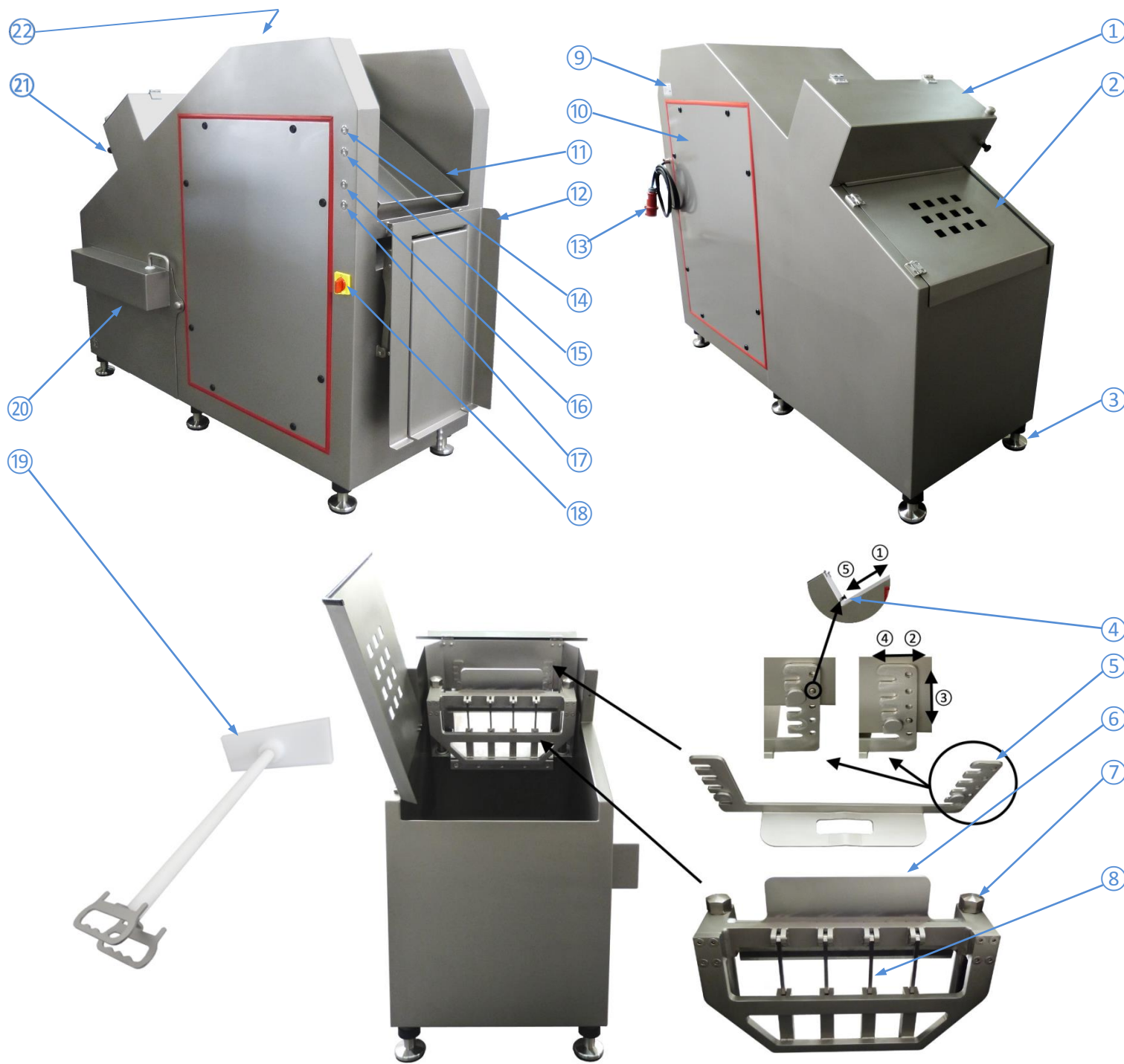
(with machine foot)



(with transportation foot)

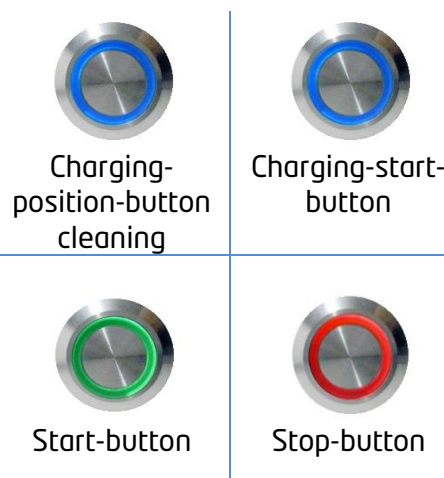


II • Operation



- 1) Hood 1
- 2) Hood 2
- 3) Machine foot
- 4) Locking bolt (down holder)
- 5) Down holder
- 6) Cutting knife
- 7) Knife beam
- 8) Vertical blades
- 9) Name plate
- 10) Lateral panel
- 11) Tray
- 12) Folding table
- 13) Power supply
- 14) Charging-position-button cleaning
- 15) Charging -start-button
- 16) Start-button
- 17) Stop-button
- 18) Main switch
- 19) Pusher for residual product
- 20) Door (for trolley)
- 21) Locking bolt (Hood 1)
- 22) Chamber product supply

III • Operating elements



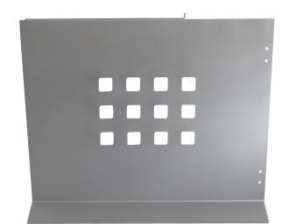
IV • Mains connection



① • Hood 1



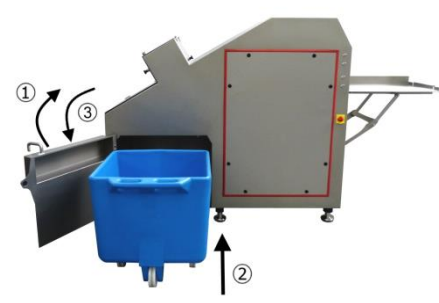
② • Hood 2



V • folding table (up)



VI • Trolley (push in)



VII • Folding table (charging)



VIII • Tray (charging)



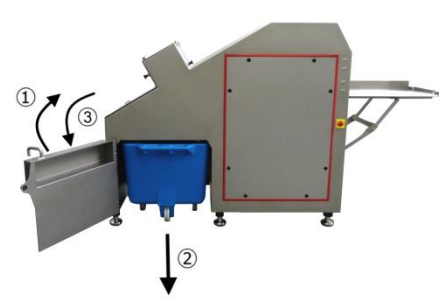
IX • Tray movement



X • Machine start / stop



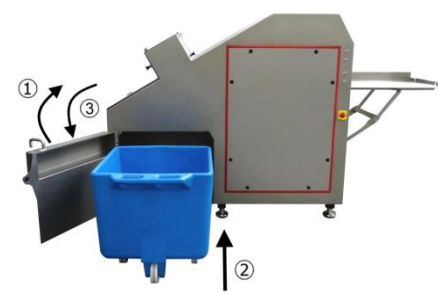
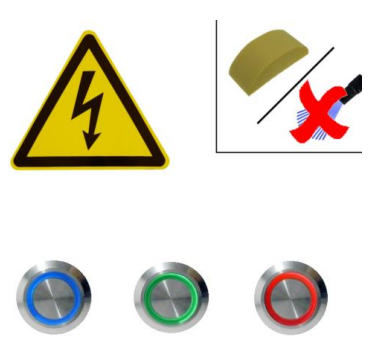
XI • Trolley (pull out)



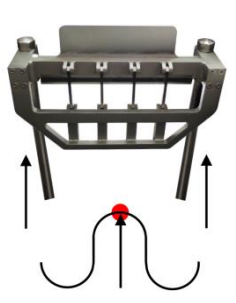
XII • Security functions



XIII • Initial operation



XIV • Cleaning (preparation)



XV • Cleaning

